

# Chepstow Society – Town Planning Roundup for October 2021

Simon Maddison, 1<sup>st</sup> November 2021

## Introduction

This is a brief summary of items from October.

### Severn Bridge Social Club, Bulwark

DM/2021/01507; Severn Bridge Social Club Bulwark Road; Demolition of the former Severn Bridge Social Club and erection of a supermarket (Lidl), car parking, landscaping and all associated works.

There is feedback from Highways about the access for deliveries, which is planned to go through the car park, the number of parking bays and the size of the parking bays being smaller than planning requirements. These will all need to be reconsidered.

### Chepstow Town AFC

DM/2021/01277; Chepstow Town AFC; 100 seated Stand and a 50 seated Stand

There was concern about parking stress that already exists on local roads on match days, and the potential for that to increase. MCC highways have recommended the club set up a parking management plan in the local streets, in conjunction with local police and the Council. This has now been done by the club who will create more parking bays as well as have parking stewards on duty. The recommendation from the council is that the application is approved, provided this plan is strictly adhered to.

### 1 St Lawrence Road

DM/2021/01693 | Demolition of existing dwelling and erection of a replacement dwelling and an additional dwelling. | Overdale 1 St Lawrence Road Chepstow NP16 5BJ

Located on the old St Lawrence Road, just off the a48 by High Beech Roundabout, the existing house on this site is to be demolished, with a second house to be built in the garden. Similar divisions of property appear to have precedence with neighbouring houses.

### Queens Head, Moor Street

DM/2021/00690 | Removing block work from existing opening to form access to rear. this will be done in order to extend the public house into existing office space. A new stud wall will be erected at the rear to create smaller office space behind the pub. Both rooms will have shared use of the existing entrance onto the driveway. The existing toilet cubicle will be rotated 90 degrees. | The Old Queens Head 12 Moor Street Chepstow Monmouthshire

Not sure how I missed this change to my favourite Chepstow Pub! The single room bar has been extended into the room behind. It looks to be similar to the way it was 20 or more years ago. Work has all been completed and operations in full swing. It looks really good.

### Air Cadet Hut site, Lower Church Street

DC/2012/00945 - DC/2018/00190 | 3 No. two-storey terraced dwellings | Territorial Army Cadet Centre, Lower Church Street, Chepstow, Monmouthshire, NP16 5HP

Work progresses on this site. The footings were being put in the last time I passed a week or so back.

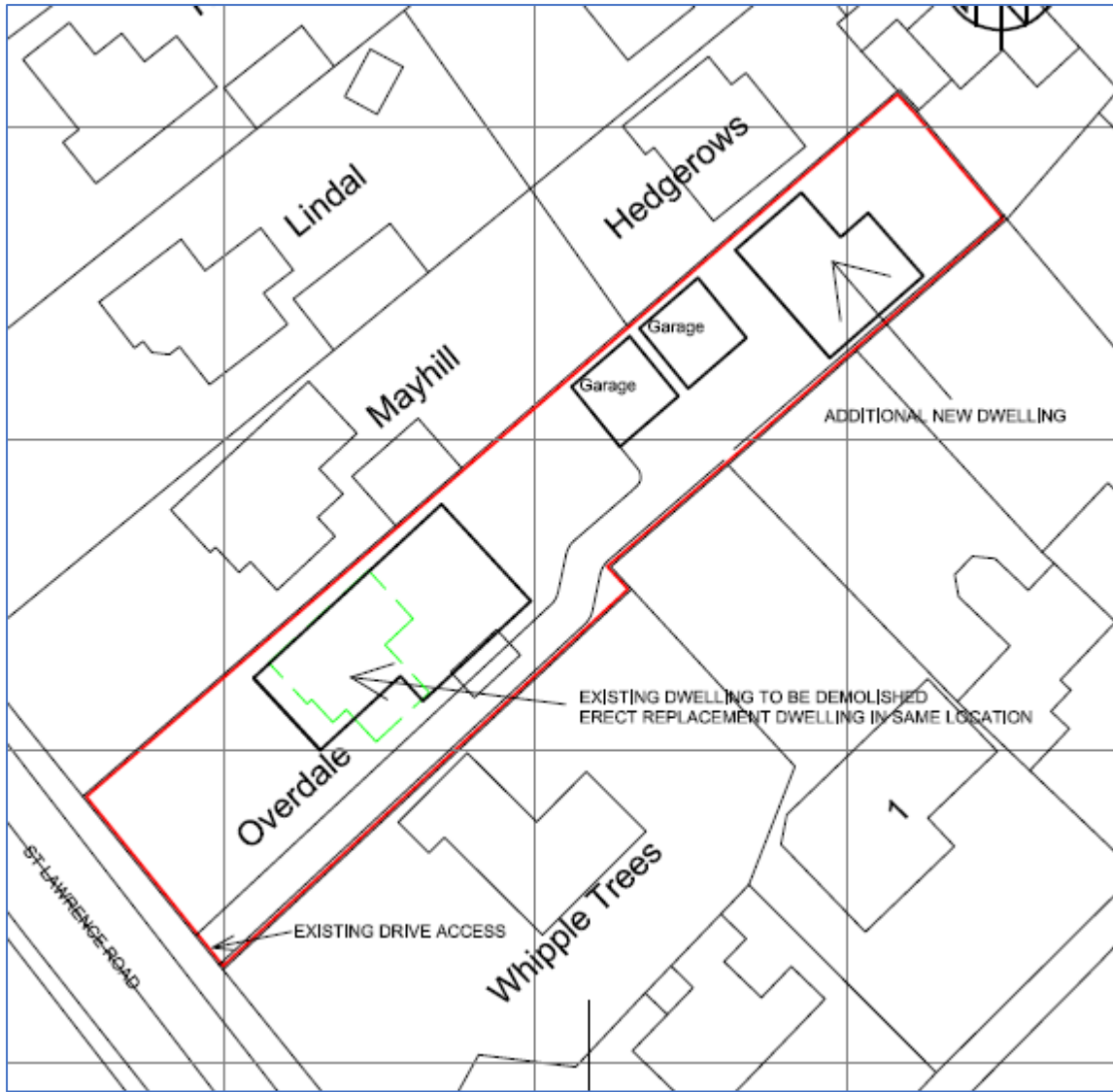


Figure 1 - 1 St Lawrence Road



Figure 2 - The way it used to be at the Queens Head, looks really nice now

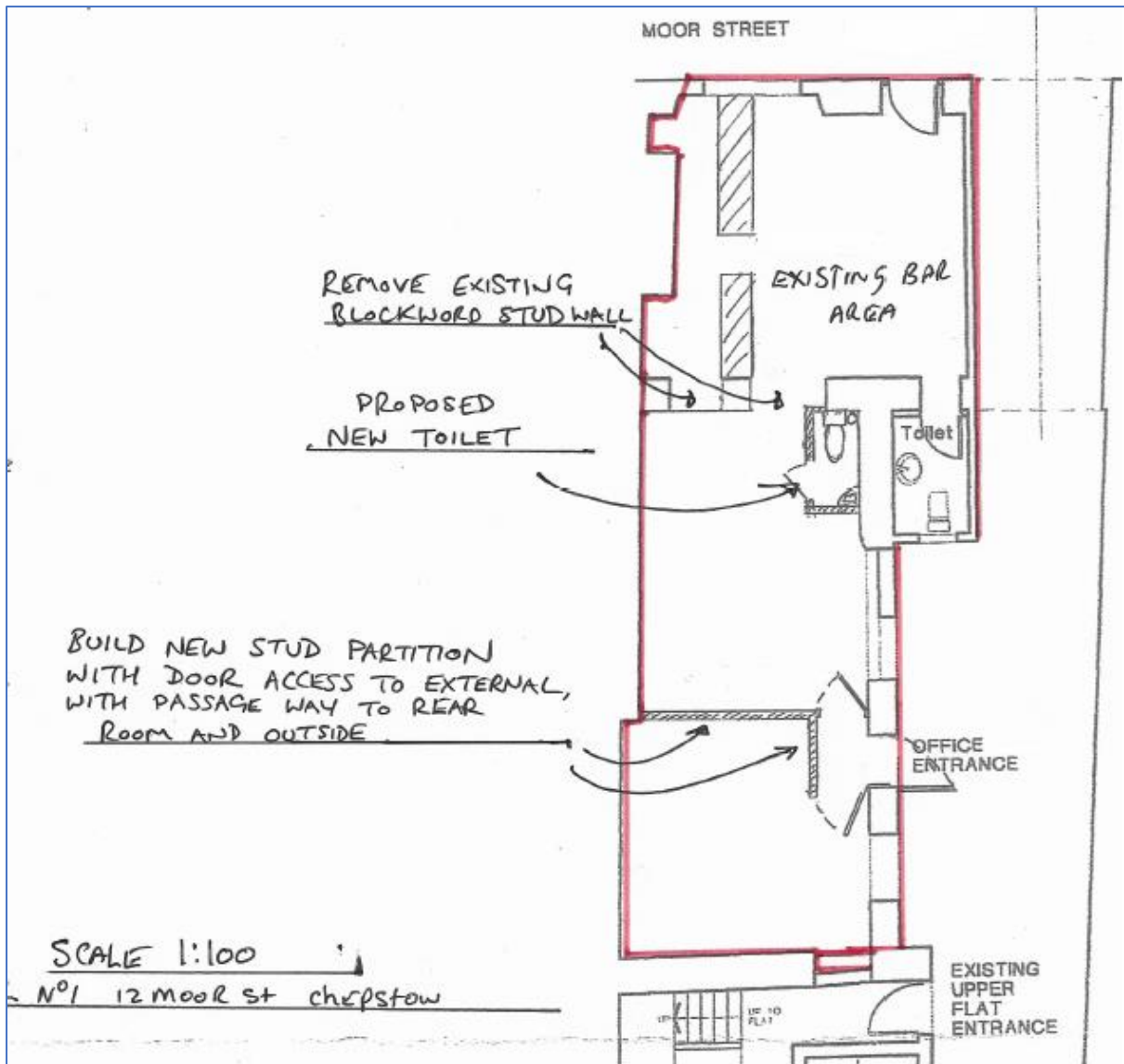


Figure 3 - The new layout at the Queens Head, Moor Street



Figure 4 - Foundations for the new cottages on the old ATC site in Lower Church St